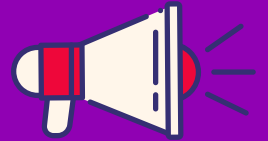


The impact in 2022–2023 of

Local infrastructure in London



40

Local infrastructure organisations, including volunteer centres, in London.

“Local infrastructure acts as the lifeblood – empowering communities, amplifying voices, and effecting positive change.”

London's local infrastructure 2022 - 2023

- Volunteer Centre (Total = 10)
- Integrated CVS and Volunteer Centre (Total = 15)
- CVS (Total = 15)
- No local infrastructure (Total = 2)



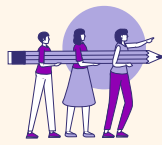
Map: London Plus 2024 • Source: London Plus • Map data: © Crown copyright and database right 2018 • Created with Datawrapper

[Click here to explore our map](#)

Reaching & informing

96,500+ newsletter subscribers

120,000+ social media followers



Capability building

11,000 attending training

9,000 organisations supported



Connecting

1,400 networks and forum meetings



“Over the last year we have been the glue in bringing a diverse sector together, ensuring it is effective, informed, connected, and co-ordinated at a time when the cost of living crisis shows no sign of easing, and its devastating impacts far reaching.”

Sustaining

£24.6 million leveraged into the sector



£1.4 million grants distributed



The 'Go To' place for volunteering locally

£35.9 billion estimated total value of volunteering in London



17,000+ volunteers placed & supported



“As money gets tight, more is expected from volunteers and that can be unsustainable.”

“Despite their pivotal role, Volunteer Centres face significant funding reductions, amidst the challenges in recruiting and sustaining volunteering.”

A key part of the system



10,000+ stakeholders engaged

Partners include:

- Local Authorities
- NHS & Integrated Care Systems
- Police
- Universities
- Funders



Our call to action

“This is a wake-up call; we're emphasising the indispensable role local infrastructure plays and the urgent need for meaningful investment to ensure they can continue to provide comprehensive support to London's most marginalised communities.”

Local Infrastructure impact report



Volunteering Infrastructure impact report



london plus